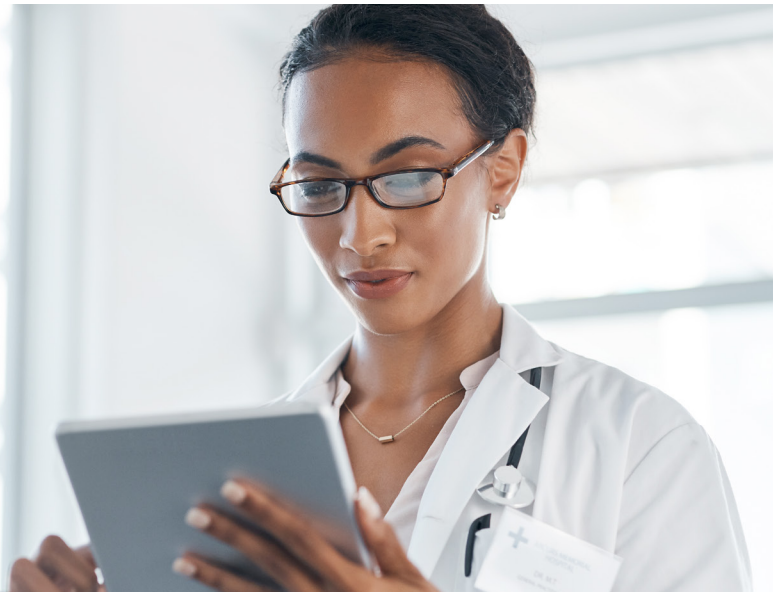


**PointClickCare®**

## Solution Sheet

# Hospitals and Health Systems

What outcomes could you deliver with better insights?



Immediate, point of care access to deep, real-time insights at every stage of the patient's journey.

Hospitals and their care teams know that accessing the right information at the right time results in high-quality care delivery and better outcomes.

Whether you're responsible for a patient in the emergency department (ED), a post-acute setting, or simply improving care transitions at the time of discharge, PointClickCare's comprehensive care collaboration solutions support:



See where your patients are and why, in real-time.



Automated clinical data exchange across the care continuum.



Immediate insights for timely interventions from the ED through post-discharge.



Data to support proactive patient monitoring.



Enhanced quality performance.



Reduction in unnecessary admissions and readmissions.

## North America's Largest Care Collaboration Network

We power the largest collection of acute and post-acute insights in the United States. Our solutions span the care continuum including post-acute settings, with 95% of hospitals in the United States discharging patients to skilled nursing facilities in our network. By joining our network, your hospital or health system gains access to comprehensive data for optimized care and collaboration



PAC Management facilitates the seamless, automatic flow of patient data between our acute and post-acute care institutions. When a patient is transferred from the hospital to a skilled nursing facility, their data is sent with them. This continuity makes processes more efficient for our staff and offers accurate information to help families make the best care transition decisions for their loved ones, through a single, secure platform.

**Lori Baker**

Director | TriHealth

## PointClickCare's Hospital and Health System Solutions include:



### ED Optimization

Point of care insights for emergency department (ED) staff enable more informed, efficient, and appropriate care delivery. Automated alerts and actionable insights integrated into existing workflows help ED teams quickly identify high-priority patients like those from skilled nursing settings or frequent ED users requiring less urgent care. Access to comprehensive patient history and active care plans enhances treatment, admission, and discharge decisions, improving continuity, safety, and financial outcomes.



### Intelligent Transitions

Hospitals connected to our platform can access accurate insights with real-time visibility to easily track patients from ED to inpatient and post-discharge. Timely care coordination helps case managers improve transitions of care by collaborating more effectively with teams across the care continuum. Our data and intelligent tools enable insights that help you to identify and manage high-risk patients and optimize care, performance, and outcomes.



### PAC Management

With PAC Management, providers and care teams can track patients throughout their post-acute journey. Enable success in an increasingly value-based world by preventing avoidable readmissions and better controlling the cost of care. Empower care managers to intervene on behalf of patients at high or rising risk with AI-driven "Predictive Return to Hospital" risk scoring. Streamline workflows by eliminating time spent searching and calling for patient status updates. Leverage the Network Management module to gain visibility into quality metrics for post-acute facilities in your area, including Star Ratings, readmission rates, and average length of stay. Identify opportunities for collaboration and quality improvement, while building out a superior post-acute partner network.

Scan or click code  
to discover more



## PointClickCare®

PointClickCare is a leading healthcare technology platform enabling meaningful collaboration and access to real-time insights at every stage of the patient healthcare journey.