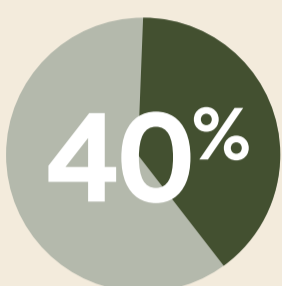


Illuminating the Black Hole of Post-Acute ED Transfers with Real-Time AI

The Challenge: Blind Spots in Post-Acute Transfers Cost Hospitals Billions



- Patients from SNFs frequently arrive at the ED without critical, actionable context.
- ED teams spend valuable time piecing together fragmented or missing documentation.
- Delays lead to unnecessary tests, higher readmission risk, and lost opportunities for early intervention.



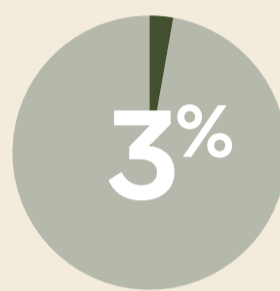
Up to 40% of SNF hospital transfers are considered potentially avoidable¹

\$52.4
BILLION

\$52.4 billion in annual costs are attributed to avoidable hospital readmissions, including those from SNFs²

\$16,037
PER PATIENT

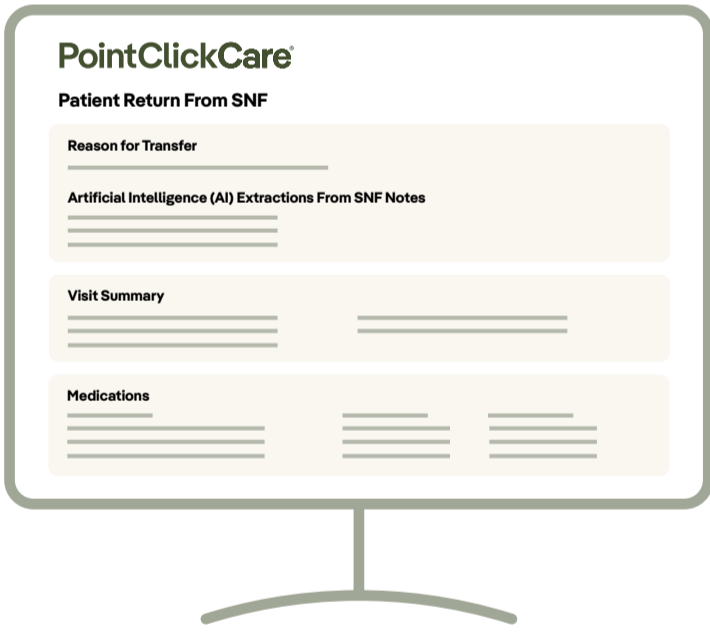
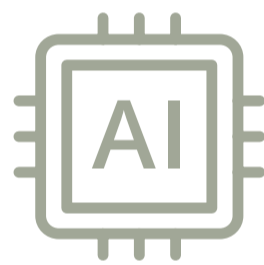
The average cost of a 30-day readmission: \$16,037 per patient³



Medicare penalties for exceeding national benchmarks can cost hospitals up to 3% of annual reimbursements⁴

How AI Can Help Drive Better Outcomes: Insights Delivered Instantly into ED Workflow

- PointClickCare's **Reason for Transfer AI Model** extracts and summarizes SNF EHR data from the 24 hours prior to transfer
- Alleviates the need for SNF documentation
- Enables faster, more informed ED care decisions
- Streamlines admissions, if required, or discharge with better information

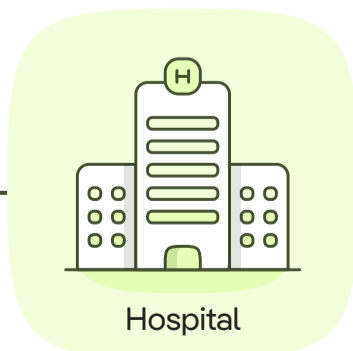
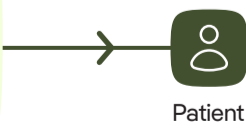


An instant, summarized view saves critical time:

- SNF admit date and diagnoses
- SNF facility and practitioner details
- Emergency contacts and patient code status
- Recent 14 days of administered medications
- AI flags condition changes from SNF EHR

The Results: Real-Time AI and Actionable Insights that Eliminate Guesswork

| Benefits | Results |
|---|---|
| Identify high-needs, complex patients instantly for optimal care coordination | Enabling faster assessment— reducing avoidable ED utilization by nearly 50% . |
| Easily access essential clinical data for SNF transfers | Cutting patient chart searches and physician time by over 100 hours per week. |
| Access vital clinical context on SNF to ED transfer decisions | Lowering unnecessary readmissions by more than 30% , helping avoid costly CMS penalties. |
| Enhance care delivery at every stage | Reducing ED length of stay by as much as 40%. |



Sources

¹ Nursing Home Emergency Room Transfer Statistics. Understanding the Complexities of Nursing Home Transfers to Emergency Rooms, Rosewood Rehabilitation and Nursing, March 2025.

^{2,3,4} Hospital Readmissions: Reducing Costs with Innovative Solutions, PharMD | LIVE, January 2025.

Discover more



PointClickCare is a leading health tech company with one simple mission: to help every provider deliver exceptional care.